

LRRK1 Rabbit Polyclonal Antibody



CAB17768

Product Information

Size:

20uL, 50uL, 100uL, 200uL

Observed MW:

250kDa

Calculated MW:

Applications:

WB

Reactivity:

Human

Protein Background

This gene encodes a multi-domain protein that is a leucine-rich repeat kinase and a GDP/GTP binding protein. The encoded protein is thought to play a role in the regulation of bone mass. Mice lacking a similar gene showed severe osteopetrosis, increased bone mineralization and decreased bone resorption. [provided by RefSeq, Jan 2017]

Immunogen information

Gene ID:

79705

Uniprot

Q38SD2

Synonyms:

RIPK6; Roco1; LRRK1

Antibody Information

Recommended dilutions:

WB 1:500 - 1:2000

Source:

Rabbit

Isotype:

IgG

Purification:

Affinity purification

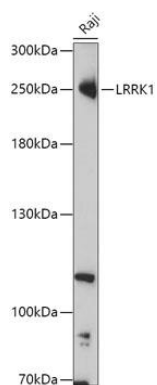
Immunogen:

Recombinant fusion protein containing a sequence corresponding to amino acids 10-90 of human LRRK1 (NP_078928.3).

Storage:

Store at -20°C. Avoid freeze / thaw cycles. Buffer: PBS with 0.02% sodium azide, 50% glycerol, pH7.3.

Product Images



Western blot - LRRK1 Polyclonal Antibody (CAB17768)