

[KO Validated] SLC25A22 Rabbit Polyclonal Antibody

CAB17772



Product Information

Size:

20uL, 50uL, 100uL, 200uL

Observed MW:

34kDa

Calculated MW:

Applications:

WB IF

Reactivity:

Human, Mouse, Rat

Protein Background

This gene encodes a mitochondrial glutamate carrier. Mutations in this gene are associated with early infantile epileptic encephalopathy. Multiple alternatively spliced variants, encoding the same protein, have been identified.[provided by RefSeq, Jul 2010]

Immunogen information

Gene ID:

79751

Uniprot

Q9H936

Synonyms:

EIEE3; GC-1; GC1; NET44; SLC25A22

Antibody Information

Recommended dilutions:

WB 1:500 - 1:2000 IF 1:50 - 1:200

Source:

Rabbit

Isotype:

IgG

Purification:

Affinity purification

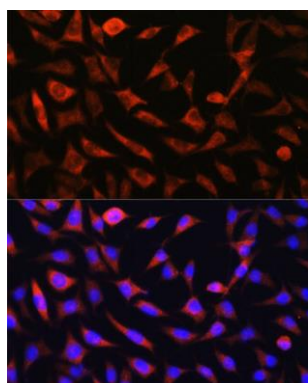
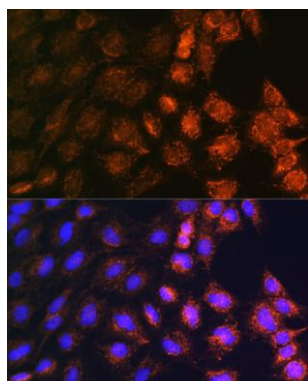
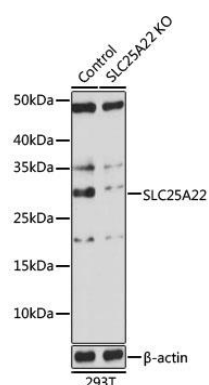
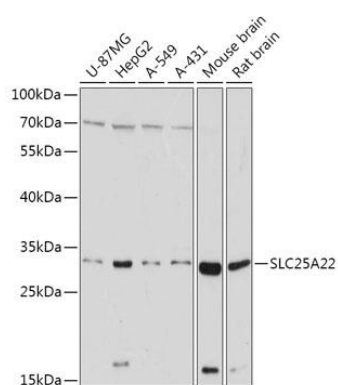
Immunogen:

Recombinant fusion protein containing a sequence corresponding to amino acids 128-188 of human SLC25A22 (NP_078974.1).

Storage:

Store at -20°C. Avoid freeze / thaw cycles. Buffer: PBS with 0.02% sodium azide, 50% glycerol, pH7.3.

Product Images



Western blot analysis of extracts of various cell lines, using SLC25A22 antibody (CAB17772) at 1:1000 dilution. Secondary antibody: HRP Goat Anti-Rabbit IgG (H+L) (CABS014) at 1:10000 dilution. Lysates/proteins: 25ug per lane. Blocking buffer: 3% nonfat dry milk in TBST. Detection: ECL Basic Kit (CABM00020). Exposure time: 30s.

Western blot analysis of extracts from normal (control) and SLC25A22 knockout (KO) 293T cells, using SLC25A22 antibody (CAB17772) at 1:1000 dilution. Secondary antibody: HRP Goat Anti-Rabbit IgG (H+L) (CABS014) at 1:10000 dilution. Lysates/proteins: 25ug per lane. Blocking buffer: 3% nonfat dry milk in TBST. Detection: ECL Basic Kit (CABM00020). Exposure time: 90s.

Immunofluorescence analysis of C6 cells using SLC25A22 antibody (CAB17772) at dilution of 1:100. Blue: DAPI for nuclear staining.

Immunofluorescence analysis of L929 cells using SLC25A22 antibody (CAB17772) at dilution of 1:100. Blue: DAPI for nuclear staining.