

PGBD1 Rabbit Polyclonal Antibody



CAB17794

Product Information

Size:

20uL, 50uL, 100uL, 200uL

Observed MW:

93kDa

Calculated MW:

Protein Background

The piggyBac family of proteins, found in diverse animals, are transposases related to the transposase of the canonical piggyBac transposon from the moth, *Trichoplusia ni*. This family also includes genes in several genomes, including human, that appear to have been derived from the piggyBac transposons. This gene belongs to the subfamily of piggyBac transposable element derived (PGBD) genes. The PGBD proteins appear to be novel, with no obvious relationship to other transposases, or other known protein families. This gene product is specifically expressed in the brain, however, its exact function is not known. Alternative splicing results in multiple transcript variants encoding the same protein.[provided by RefSeq, May 2010]

Applications:

WB

Reactivity:

Human

Immunogen information

Gene ID:

84547

Uniprot

Q96JS3

Antibody Information

Recommended dilutions:

WB 1:500 - 1:2000

Source:

Rabbit

Isotype:

IgG

Purification:

Affinity purification

Synonyms:

HUCEP-4; SCAND4; dJ874C20.4; PGBD1

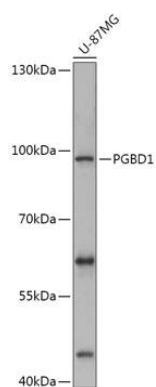
Immunogen:

Recombinant fusion protein containing a sequence corresponding to amino acids 150-450 of human PGBD1 (NP_115896.1).

Storage:

Store at -20°C. Avoid freeze / thaw cycles. Buffer: PBS with 0.02% sodium azide, 50% glycerol, pH7.3.

Product Images



Western blot - PGBD1 Polyclonal Antibody (CAB17794)