

# DPY30 Rabbit Polyclonal Antibody



CAB17796

---

## Product Information

### Size:

20uL, 50uL, 100uL, 200uL

### Observed MW:

Refer to figures

### Calculated MW:

### Applications:

IHC

### Reactivity:

Human

## Protein Background

This gene encodes an integral core subunit of the SET1/MLL family of H3K4 methyltransferases. The encoded protein directly controls cell cycle regulators and plays an important role in the proliferation and differentiation of human hematopoietic progenitor cells. [provided by RefSeq, Mar 2016]

## Immunogen information

### Gene ID:

84661

### Uniprot

Q9C005

### Synonyms:

Cps25; HDPY-30; Saf19; DPY30

## Antibody Information

### Recommended dilutions:

IHC 1:50 - 1:100

### Source:

Rabbit

### Isotype:

IgG

### Purification:

Affinity purification

### Immunogen:

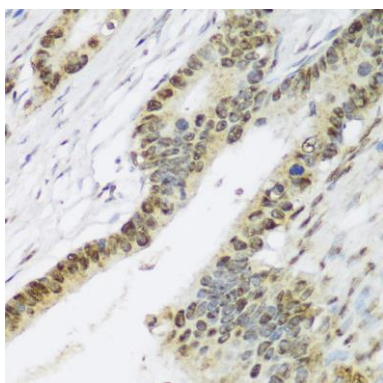
Recombinant fusion protein containing a sequence corresponding to amino acids 1-99 of human DPY30 (NP\_115963.1).

### Storage:

Store at -20°C. Avoid freeze / thaw cycles. Buffer: PBS with 0.02% sodium azide, 50% glycerol, pH7.3.

## Product Images

---



Immunohistochemistry - DPY30 Polyclonal Antibody (CAB17796)