

EAF1 Rabbit Polyclonal Antibody



CAB17798

Product Information

Size:

20uL, 50uL, 100uL, 200uL

Observed MW:

29kDa

Calculated MW:

17kDa/29kDa

Applications:

WB

Reactivity:

Human, Rat

Antibody Information

Recommended dilutions:

WB 1:500 - 1:2000

Source:

Rabbit

Isotype:

IgG

Purification:

Affinity purification

Protein Background

Immunogen information

Gene ID:

85403

Uniprot

Q96JC9

Synonyms:

EAF1

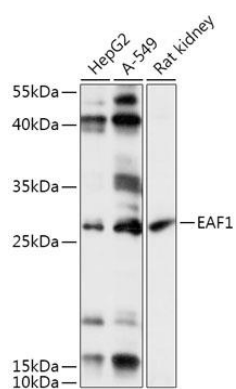
Immunogen:

Recombinant fusion protein containing a sequence corresponding to amino acids 50-120 of human EAF1 (NP_149074.3).

Storage:

Store at -20°C. Avoid freeze / thaw cycles. Buffer: PBS with 0.02% sodium azide, 50% glycerol, pH7.3.

Product Images



Western blot - EAF1 Polyclonal Antibody (CAB17798)