

# NKD1 Rabbit Polyclonal Antibody



CAB17799

---

## Product Information

### Size:

20uL, 50uL, 100uL, 200uL

### Observed MW:

60kDa

### Calculated MW:

### Applications:

WB

### Reactivity:

Human

## Protein Background

In the mouse, Nkd is a Dishevelled (see DVL1; MIM 601365)-binding protein that functions as a negative regulator of the Wnt (see WNT1; MIM 164820)-beta-catenin (see MIM 116806)-Tcf (see MIM 602272) signaling pathway.[supplied by OMIM, Jun 2003]

## Immunogen information

### Gene ID:

85407

### Uniprot

Q969G9

### Synonyms:

Naked1; NKD1

## Antibody Information

### Recommended dilutions:

WB 1:500 - 1:2000

### Source:

Rabbit

### Isotype:

IgG

### Purification:

Affinity purification

### Immunogen:

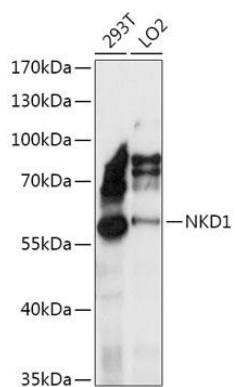
A synthetic peptide of Human NKD1.

### Storage:

Store at -20°C. Avoid freeze / thaw cycles. Buffer: PBS with 0.02% sodium azide, 50% glycerol, pH7.3.

## Product Images

---



Western blot - NKD1 Polyclonal Antibody (CAB17799)