

# RCCD1 Rabbit Polyclonal Antibody



CAB17804

---

## Product Information

### Size:

20uL, 50uL, 100uL, 200uL

### Observed MW:

45kDa

### Calculated MW:

### Applications:

WB

### Reactivity:

Human, Rat

## Antibody Information

### Recommended dilutions:

WB 1:500 - 1:2000

### Source:

Rabbit

### Isotype:

IgG

### Purification:

Affinity purification

## Protein Background

### Immunogen information

#### Gene ID:

91433

#### Uniprot

A6NED2

#### Synonyms:

RCCD1

#### Immunogen:

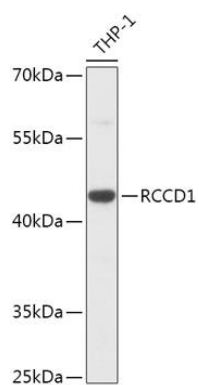
Recombinant fusion protein containing a sequence corresponding to amino acids 230-360 of human RCCD1 (NP\_001017919.1).

#### Storage:

Store at -20°C. Avoid freeze / thaw cycles. Buffer: PBS with 0.02% sodium azide, 50% glycerol, pH7.3.

## Product Images

---



Western blot - RCCD1 Polyclonal Antibody (CAB17804)