

CDHR1 Rabbit Polyclonal Antibody



CAB17808

Product Information

Size:

20uL, 50uL, 100uL, 200uL

Observed MW:

110kDa

Calculated MW:

Applications:

WB

Reactivity:

Human, Mouse, Rat

Protein Background

This gene belongs to the cadherin superfamily of calcium-dependent cell adhesion molecules. The encoded protein is a photoreceptor-specific cadherin that plays a role in outer segment disc morphogenesis. Mutations in this gene are associated with inherited retinal dystrophies. Alternatively spliced transcript variants encoding different isoforms have been identified. [provided by RefSeq, Jul 2013]

Immunogen information

Gene ID:

92211

Uniprot

Q96JP9

Synonyms:

CORD15; PCDH21; PRCAD; RP65; CDHR1

Antibody Information

Recommended dilutions:

WB 1:500 - 1:2000

Source:

Rabbit

Isotype:

IgG

Purification:

Affinity purification

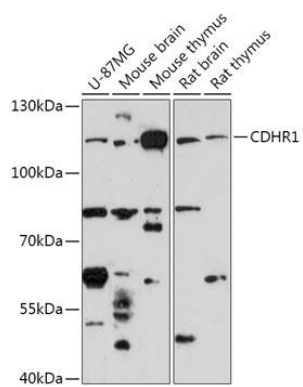
Immunogen:

Recombinant fusion protein containing a sequence corresponding to amino acids 20-300 of human CDHR1 (NP_001165442.1).

Storage:

Store at -20°C. Avoid freeze / thaw cycles. Buffer: PBS with 0.02% sodium azide, 50% glycerol, pH7.3.

Product Images



Western blot - CDHR1 Polyclonal Antibody (CAB17808)