

NAF1 Rabbit Polyclonal Antibody



CAB17809

Product Information

Size:

20uL, 50uL, 100uL, 200uL

Observed MW:

62-70kDa

Calculated MW:

Applications:

WB

Reactivity:

Human, Mouse, Rat

Antibody Information

Recommended dilutions:

WB 1:500 - 1:2000

Source:

Rabbit

Isotype:

IgG

Purification:

Affinity purification

Protein Background

Immunogen information

Gene ID:

92345

Uniprot

Q96HR8

Synonyms:

NAF1

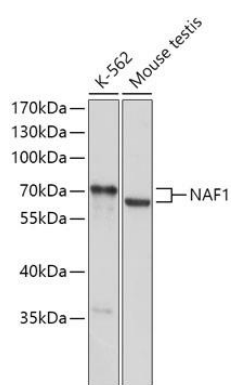
Immunogen:

Recombinant fusion protein containing a sequence corresponding to amino acids 150-400 of human NAF1 (NP_612395.2).

Storage:

Store at -20°C. Avoid freeze / thaw cycles. Buffer: PBS with 0.02% sodium azide, 50% glycerol, pH7.3.

Product Images



Western blot - NAF1 Polyclonal Antibody (CAB17809)