

PGLYRP2 Rabbit Polyclonal Antibody



CAB17814

Product Information

Size:

20uL, 50uL, 100uL, 200uL

Observed MW:

62kDa

Calculated MW:

62kDa/68kDa

Applications:

WB

Reactivity:

Mouse

Antibody Information

Recommended dilutions:

WB 1:500 - 1:2000

Source:

Rabbit

Isotype:

IgG

Purification:

Affinity purification

Protein Background

This gene encodes a peptidoglycan recognition protein, which belongs to the N-acetylmuramoyl-L-alanine amidase 2 family. This protein hydrolyzes the link between N-acetylmuramoyl residues and L-amino acid residues in bacterial cell wall glycopeptides, and thus may play a scavenger role by digesting biologically active peptidoglycan into biologically inactive fragments. [provided by RefSeq, Sep 2011]

Immunogen information

Gene ID:

114770

Uniprot

Q96PD5

Synonyms:

HMFT0141; PGLYRPL; PGRP-L; PGRPL; TAGL-like; tagL; tagL-alpha; tagl-beta; PGLYRP2

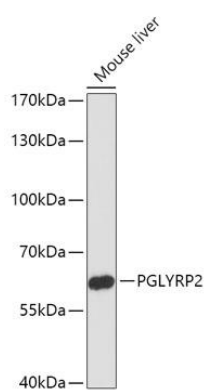
Immunogen:

A synthetic peptide of Human PGLYRP2.

Storage:

Store at -20°C. Avoid freeze / thaw cycles. Buffer: PBS with 0.02% sodium azide, 50% glycerol, pH7.3.

Product Images



Western blot - PGLYRP2 Polyclonal Antibody (CAB17814)