

CNTD1 Rabbit Polyclonal Antibody



CAB17819

Product Information

Size:

20uL, 50uL, 100uL, 200uL

Observed MW:

37kDa

Calculated MW:

Applications:

WB

Reactivity:

Human

Antibody Information

Recommended dilutions:

WB 1:500 - 1:2000

Source:

Rabbit

Isotype:

IgG

Purification:

Affinity purification

Protein Background

Immunogen information

Gene ID:

124817

Uniprot

Q8N815

Synonyms:

CNTD; CNTD1

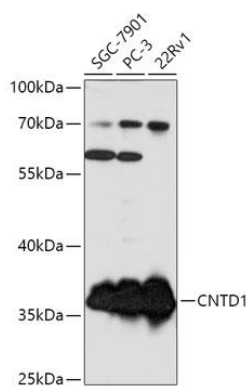
Immunogen:

Recombinant fusion protein containing a sequence corresponding to amino acids 1-120 of human CNTD1 (NP_001317151.1).

Storage:

Store at -20°C. Avoid freeze / thaw cycles. Buffer: PBS with 0.02% sodium azide, 50% glycerol, pH7.3.

Product Images



Western blot - CNTD1 Polyclonal Antibody (CAB17819)