

CTSK Rabbit Polyclonal Antibody



CAB1782

Product Information

Size:

20uL, 50uL, 100uL, 200uL

Observed MW:

41kDa

Calculated MW:

36kDa

Applications:

WB IHC

Reactivity:

Mouse, Rat

Protein Background

The protein encoded by this gene is a lysosomal cysteine proteinase involved in bone remodeling and resorption. This protein, which is a member of the peptidase C1 protein family, is predominantly expressed in osteoclasts. However, the encoded protein is also expressed in a significant fraction of human breast cancers, where it could contribute to tumor invasiveness. Mutations in this gene are the cause of pycnodysostosis, an autosomal recessive disease characterized by osteosclerosis and short stature.

Immunogen information

Gene ID:

1513

Uniprot

P43235

Synonyms:

CTSK; CTS02; CTSO; CTSO1; CTSO2; PKND; PYCD

Antibody Information

Recommended dilutions:

WB 1:500 - 1:2000 IHC 1:50 - 1:100

Source:

Rabbit

Isotype:

IgG

Purification:

Affinity purification

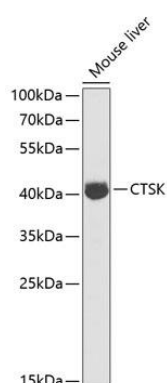
Immunogen:

Recombinant fusion protein containing a sequence corresponding to amino acids 115-329 of human CTSK (NP_000387.1).

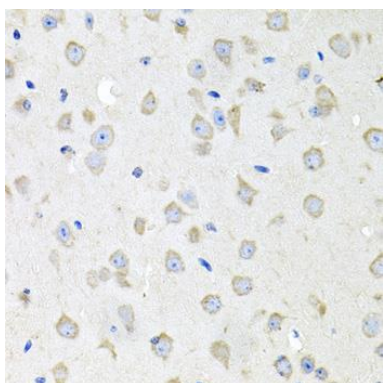
Storage:

Store at -20°C. Avoid freeze / thaw cycles. Buffer: PBS with 0.02% sodium azide, 50% glycerol, pH7.3.

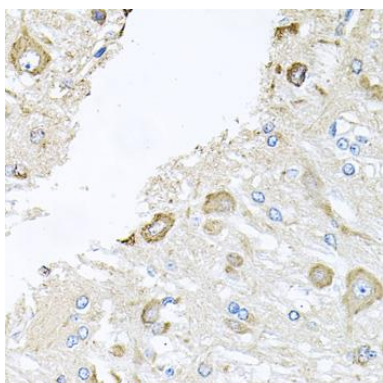
Product Images



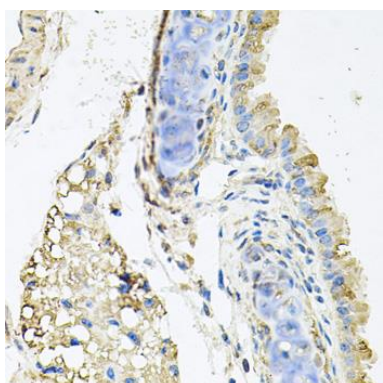
Western blot analysis of extracts of mouse liver, using CTSK antibody (CAB1782) at 1:1000 dilution. Secondary antibody: HRP Goat Anti-Rabbit IgG (H+L) (CABS014) at 1:10000 dilution. Lysates/proteins: 25ug per lane. Blocking buffer: 3% nonfat dry milk in TBST. Detection: ECL Basic Kit (CABM00020). Exposure time: 30s.



Immunohistochemistry of paraffin-embedded mouse brain using CTSK antibody (CAB1782) at dilution of 1:100 (40x lens).



Immunohistochemistry of paraffin-embedded rat brain using CTSK antibody (CAB1782) at dilution of 1:100 (40x lens).



Immunohistochemistry of paraffin-embedded mouse lung using CTSK antibody (CAB1782) at dilution of 1:100 (40x lens).