

# ASB17 Rabbit Polyclonal Antibody



CAB17822

---

## Product Information

### Size:

20uL, 50uL, 100uL, 200uL

### Observed MW:

34kDa

### Calculated MW:

34kDa

### Applications:

WB

### Reactivity:

Human, Mouse, Rat

## Antibody Information

### Recommended dilutions:

WB 1:500 - 1:2000

### Source:

Rabbit

### Isotype:

IgG

### Purification:

Affinity purification

## Protein Background

### Immunogen information

#### Gene ID:

127247

#### Uniprot

Q8WXJ9

#### Synonyms:

Asb-17; ASB17

#### Immunogen:

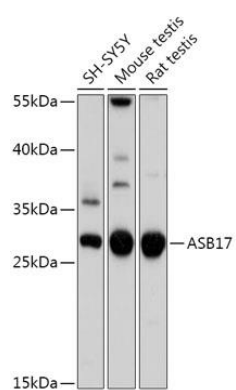
Recombinant fusion protein containing a sequence corresponding to amino acids 30-130 of human ASB17 (NP\_543144.1).

#### Storage:

Store at -20°C. Avoid freeze / thaw cycles. Buffer: PBS with 0.02% sodium azide, 50% glycerol, pH7.3.

## Product Images

---



Western blot - ASB17 Polyclonal Antibody (CAB17822)