

CLVS2 Rabbit Polyclonal Antibody



CAB17826

Product Information

Size:

20uL, 50uL, 100uL, 200uL

Observed MW:

38kDa

Calculated MW:

Applications:

WB

Reactivity:

Human

Protein Background

This gene encodes a protein that belongs to the SEC14/CRAL-TRIO family of proteins. A similar protein in rat is thought to function in the endosomal pathway between early endosomes and mature lysosomes. [provided by RefSeq, Aug 2013]

Immunogen information

Gene ID:

134829

Uniprot

Q5SYC1

Synonyms:

C6orf212; C6orf213; RLBP1L2; bA160A10.4; CLVS2

Antibody Information

Recommended dilutions:

WB 1:500 - 1:2000

Source:

Rabbit

Isotype:

IgG

Purification:

Affinity purification

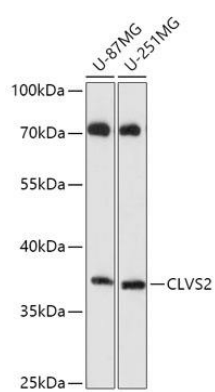
Immunogen:

Recombinant fusion protein containing a sequence corresponding to amino acids 265-327 of human CLVS2 (NP_001010852.2).

Storage:

Store at -20°C. Avoid freeze / thaw cycles. Buffer: PBS with 0.02% sodium azide, 50% glycerol, pH7.3.

Product Images



Western blot - CLVS2 Polyclonal Antibody (CAB17826)