

# STK35 Rabbit Polyclonal Antibody



CAB17828

---

## Product Information

### Size:

20uL, 50uL, 100uL, 200uL

### Observed MW:

58kDa

### Calculated MW:

### Applications:

WB

### Reactivity:

Mouse

## Protein Background

The protein encoded by this gene is a kinase that is predominantly found in the nucleus. However, it can interact with PDLIM1/CLP-36 in the cytoplasm and localize to actin stress fibers. The encoded protein may be a regulator of actin stress fibers in nonmuscle cells. [provided by RefSeq, Jul 2008]

## Immunogen information

### Gene ID:

140901

### Uniprot

Q8TDR2

### Synonyms:

CLIK1; STK35L1; STK35

## Antibody Information

### Recommended dilutions:

WB 1:500 - 1:2000

### Source:

Rabbit

### Isotype:

IgG

### Purification:

Affinity purification

### Immunogen:

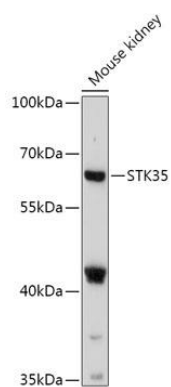
Recombinant fusion protein containing a sequence corresponding to amino acids 190-380 of human STK35 (NP\_543026.2).

### Storage:

Store at -20°C. Avoid freeze / thaw cycles. Buffer: PBS with 0.02% sodium azide, 50% glycerol, pH7.3.

## Product Images

---



Western blot - STK35 Polyclonal Antibody (CAB17828)