

# MIB2 Rabbit Polyclonal Antibody



CAB17829

---

## Product Information

### Size:

20uL, 50uL, 100uL, 200uL

### Observed MW:

110kDa

### Calculated MW:

### Applications:

WB

### Reactivity:

Human, Mouse, Rat

## Antibody Information

### Recommended dilutions:

WB 1:500 - 1:2000

### Source:

Rabbit

### Isotype:

IgG

### Purification:

Affinity purification

## Protein Background

The protein encoded by this gene is an E3 ubiquitin protein ligase that mediates ubiquitination of proteins in the Notch signaling pathway. The encoded protein may be a suppressor of melanoma invasion. [provided by RefSeq, Mar 2017]

## Immunogen information

### Gene ID:

142678

### Uniprot

Q96AX9

### Synonyms:

ZZANK1; ZZZ5; MIB2

### Immunogen:

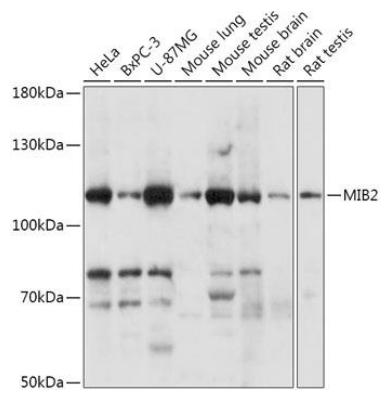
Recombinant fusion protein containing a sequence corresponding to amino acids 300-580 of human MIB2 (NP\_001164158.1).

### Storage:

Store at -20°C. Avoid freeze / thaw cycles. Buffer: PBS with 0.02% sodium azide, 50% glycerol, pH7.3.

## Product Images

---



Western blot - MIB2 Polyclonal Antibody (CAB17829)