

A2ML1 Rabbit Polyclonal Antibody



CAB17831

Product Information

Size:

20uL, 50uL, 100uL, 200uL

Observed MW:

161kDa

Calculated MW:

Protein Background

This gene encodes a member of the alpha-macroglobulin superfamily. The encoded protein is thought to be an N-glycosylated monomeric protein that acts as an inhibitor of several proteases. It has been shown to form covalent interactions with proteases, and has been reported as the p170 antigen recognized by autoantibodies in the autoimmune disease paraneoplastic pemphigus (PNP; PMID:20805888). Mutations in these gene have also been associated with some cases of Noonan syndrome (NS; PMID:24939586) as well as some cases of otitis media (PMID:26121085). Alternative splicing results in multiple transcript variants encoding different isoforms. [provided by RefSeq, Aug 2015]

Immunogen information

Applications:

WB

Reactivity:

Human, Rat

Gene ID:

144568

Uniprot

A8K2U0

Synonyms:

CPAMD9; p170; A2ML1

Antibody Information

Recommended dilutions:

WB 1:500 - 1:2000

Source:

Rabbit

Isotype:

IgG

Immunogen:

A synthetic peptide of Human A2ML1.

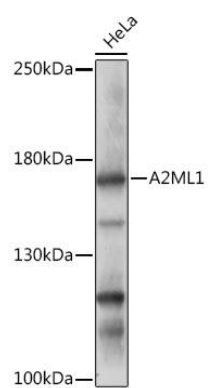
Storage:

Store at -20°C. Avoid freeze / thaw cycles. Buffer: PBS with 0.02% sodium azide, 50% glycerol, pH7.3.

Purification:

Affinity purification

Product Images



Western blot - A2ML1 Rabbit pAb (CAB17831)