

# ATP8B3 Rabbit Polyclonal Antibody



CAB17834

## Product Information

### Size:

20uL, 50uL, 100uL, 200uL

### Observed MW:

147kDa

### Calculated MW:

### Applications:

WB

### Reactivity:

Human

## Antibody Information

### Recommended dilutions:

WB 1:500 - 1:2000

### Source:

Rabbit

### Isotype:

IgG

### Purification:

Affinity purification

## Protein Background

The protein encoded by this gene belongs to the family of P-type cation transport ATPases, and to the subfamily of aminophospholipid-transporting ATPases. The aminophospholipid translocases transport phosphatidylserine and phosphatidylethanolamine from one side of a bilayer to the other. This gene encodes member 3 of phospholipid-transporting ATPase 8B; other members of this protein family are located on chromosomes 1, 15 and 18. Alternatively spliced transcript variants encoding different isoforms have been found for this gene. [provided by RefSeq, Apr 2012]

## Immunogen information

### Gene ID:

148229

### Uniprot

O60423

### Synonyms:

ATPIK; ATP8B3

### Immunogen:

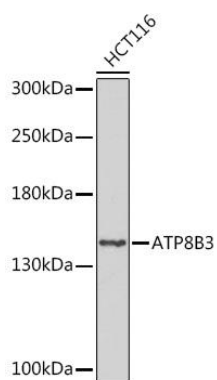
Recombinant fusion protein containing a sequence corresponding to amino acids 600-900 of human ATP8B3 (NP\_620168.1).

### Storage:

Store at -20°C. Avoid freeze / thaw cycles. Buffer: PBS with 0.02% sodium azide, 50% glycerol, pH7.3.

## Product Images

---



Western blot - ATP8B3 Rabbit pAb (CAB17834)