

# IGSF11 Rabbit Polyclonal Antibody



CAB17837

## Product Information

### Size:

20uL, 50uL, 100uL, 200uL

### Observed MW:

46kDa

### Calculated MW:

43kDa/46kDa

### Applications:

WB

### Reactivity:

Human, Mouse

## Protein Background

IGSF11 is an immunoglobulin (Ig) superfamily member that is preferentially expressed in brain and testis. It shares significant homology with coxsackievirus and adenovirus receptor (CXADR; MIM 602621) and endothelial cell-selective adhesion molecule (ESAM).[supplied by OMIM, Apr 2005]

## Immunogen information

### Gene ID:

152404

### Uniprot

Q5DX21

### Synonyms:

BT-IgSF; CT119; CXADRL1; Igsf13; VSIG3; IGSF11

## Antibody Information

### Recommended dilutions:

WB 1:500 - 1:2000

### Source:

Rabbit

### Isotype:

IgG

### Purification:

Affinity purification

### Immunogen:

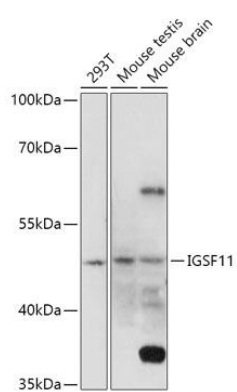
Recombinant fusion protein containing a sequence corresponding to amino acids 80-200 of human IGSF11 (NP\_689751.2).

### Storage:

Store at -20°C. Avoid freeze / thaw cycles. Buffer: PBS with 0.02% sodium azide, 50% glycerol, pH7.3.

## Product Images

---



Western blot - IGSF11 Polyclonal Antibody (CAB17837)