

# PNLDC1 Rabbit Polyclonal Antibody



CAB17838

---

## Product Information

### Size:

20uL, 50uL, 100uL, 200uL

### Observed MW:

60kDa

### Calculated MW:

### Applications:

WB

### Reactivity:

Human, Mouse, Rat

## Antibody Information

### Recommended dilutions:

WB 1:500 - 1:2000

### Source:

Rabbit

### Isotype:

IgG

### Purification:

Affinity purification

## Protein Background

### Immunogen information

#### Gene ID:

154197

#### Uniprot

Q8NA58

#### Synonyms:

HsPNLDC1; PNLDC1

#### Immunogen:

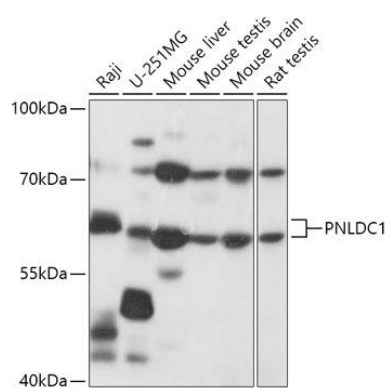
Recombinant fusion protein containing a sequence corresponding to amino acids 200-500 of human PNLDC1 (NP\_775787.1).

#### Storage:

Store at -20°C. Avoid freeze / thaw cycles. Buffer: PBS with 0.02% sodium azide, 50% glycerol, pH7.3.

## Product Images

---



Western blot - PNLDC1 Polyclonal Antibody (CAB17838)