

# PSORS1C1 Rabbit Polyclonal Antibody



CAB17841

---

## Product Information

### Size:

20uL, 50uL, 100uL, 200uL

### Observed MW:

16kDa

### Calculated MW:

### Applications:

WB

### Reactivity:

Human

## Protein Background

This gene is one of several genes thought to confer susceptibility to psoriasis and systemic sclerosis, located on chromosome 6 near the major histocompatibility complex (MHC) class I region. [provided by RefSeq, Sep 2011]

## Immunogen information

### Gene ID:

170679

### Uniprot

Q9UIG5

### Synonyms:

C6orf16; SEEK1; PSORS1C1

## Antibody Information

### Recommended dilutions:

WB 1:500 - 1:2000

### Source:

Rabbit

### Isotype:

IgG

### Purification:

Affinity purification

### Immunogen:

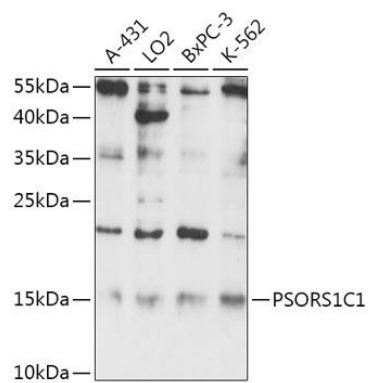
A synthetic peptide of Human PSORS1C1.

### Storage:

Store at -20°C. Avoid freeze / thaw cycles. Buffer: PBS with 0.02% sodium azide, 50% glycerol, pH7.3.

## Product Images

---



Western blot - PSORS1C1 Polyclonal Antibody (CAB17841)