

NAP1L5 Rabbit Polyclonal Antibody



CAB17849

Product Information

Size:

20uL, 50uL, 100uL, 200uL

Observed MW:

20kDa

Calculated MW:

Applications:

WB

Reactivity:

Human, Mouse

Antibody Information

Recommended dilutions:

WB 1:500 - 1:2000

Source:

Rabbit

Isotype:

IgG

Purification:

Affinity purification

Protein Background

This gene encodes a protein that shares sequence similarity to nucleosome assembly factors, but may be localized to the cytoplasm rather than the nucleus. Expression of this gene is downregulated in hepatocellular carcinomas. This gene is located within a differentially methylated region (DMR) and is imprinted and paternally expressed. There is a related pseudogene on chromosome 4. [provided by RefSeq, Nov 2015]

Immunogen information

Gene ID:

266812

Uniprot

Q96NT1

Synonyms:

DRLM; NAP1L5

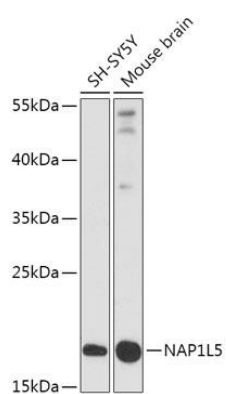
Immunogen:

Recombinant fusion protein containing a sequence corresponding to amino acids 30-120 of human NAP1L5 (NP_715638.1).

Storage:

Store at -20°C. Avoid freeze / thaw cycles. Buffer: PBS with 0.02% sodium azide, 50% glycerol, pH7.3.

Product Images



Western blot - NAP1L5 Polyclonal Antibody (CAB17849)