

P2RY8 Rabbit Polyclonal Antibody



CAB17850

Product Information

Size:

20uL, 50uL, 100uL, 200uL

Observed MW:

47kDa

Calculated MW:

Applications:

WB

Reactivity:

Human

Protein Background

The protein encoded by this gene belongs to the family of G-protein coupled receptors, that are preferentially activated by adenosine and uridine nucleotides. This gene is moderately expressed in undifferentiated HL60 cells, and is located on both chromosomes X and Y. [provided by RefSeq, Jul 2008]

Immunogen information

Gene ID:

286530

Uniprot

Q86VZ1

Synonyms:

P2Y8; P2RY8

Antibody Information

Recommended dilutions:

WB 1:500 - 1:2000

Source:

Rabbit

Isotype:

IgG

Purification:

Affinity purification

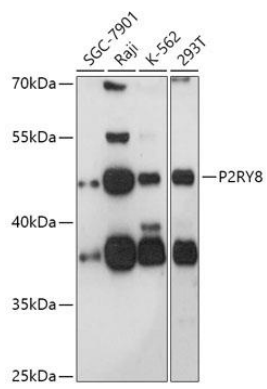
Immunogen:

Recombinant fusion protein containing a sequence corresponding to amino acids 298-359 of human P2RY8 (NP_835230.1).

Storage:

Store at -20°C. Avoid freeze / thaw cycles. Buffer: PBS with 0.02% sodium azide, 50% glycerol, pH7.3.

Product Images



Western blot - P2RY8 Polyclonal Antibody (CAB17850)