

EEF1A1 Rabbit Polyclonal Antibody



CAB17857

Product Information

Size:

20uL, 50uL, 100uL, 200uL

Observed MW:

Calculated MW:

47kDa/50kDa

Applications:

WB IHC IF

Reactivity:

Human, Mouse, Rat

Antibody Information

Recommended dilutions:

WB 1:500 - 1:2000 IHC 1:50
- 1:200 IF 1:50 - 1:200

Source:

Rabbit

Isotype:

IgG

Purification:

Affinity purification

Protein Background

This gene encodes an isoform of the alpha subunit of the elongation factor-1 complex, which is responsible for the enzymatic delivery of aminoacyl tRNAs to the ribosome. This isoform (alpha 1) is expressed in brain, placenta, lung, liver, kidney, and pancreas, and the other isoform (alpha 2) is expressed in brain, heart and skeletal muscle. This isoform is identified as an autoantigen in 66% of patients with Felty syndrome. This gene has been found to have multiple copies on many chromosomes, some of which, if not all, represent different pseudogenes.

Immunogen information

Gene ID:

1915

Uniprot

P68104

Synonyms:

EEF1A1; CCS-3; CCS3; EE1A1; EEF-1; EEF1A; EF-Tu; EF1A; GRAF-1EF;
HNGC:16303; LENG7; PT11; eEF1A-1

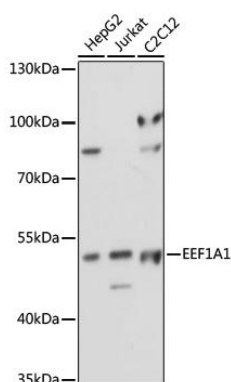
Immunogen:

Recombinant fusion protein containing a sequence corresponding to amino acids 123-462 of human EEF1A1 (NP_001393.1).

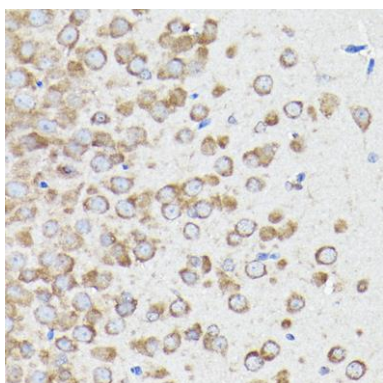
Storage:

Store at -20°C. Avoid freeze / thaw cycles. Buffer: PBS with 0.02% sodium azide, 50% glycerol, pH7.3.

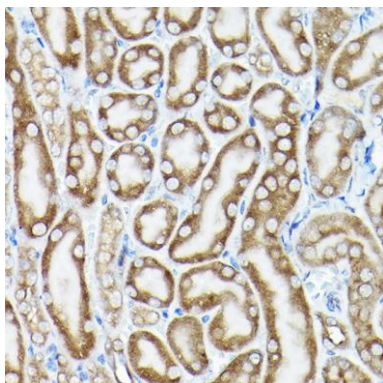
Product Images



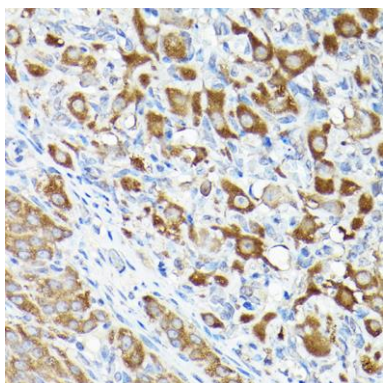
Western blot analysis of extracts of various cell lines, using EEF1A1 antibody (CAB17857) at 1:1000 dilution. Secondary antibody: HRP Goat Anti-Rabbit IgG (H+L) (CABS014) at 1:10000 dilution. Lysates/proteins: 25ug per lane. Blocking buffer: 3% nonfat dry milk in TBST. Detection: ECL Basic Kit (CABM00020). Exposure time: 1s.



Immunohistochemistry of paraffin-embedded mouse brain using EEF1A1 Rabbit pAb (CAB17857) at dilution of 1:100 (40x lens).



Immunohistochemistry of paraffin-embedded mouse kidney using EEF1A1 Rabbit pAb (CAB17857) at dilution of 1:100 (40x lens).



Immunohistochemistry of paraffin-embedded rat ovary using EEF1A1 Rabbit pAb (CAB17857) at dilution of 1:100 (40x lens).