

# USP46 Rabbit Polyclonal Antibody



**CAB17863**

---

## Product Information

### Size:

20uL, 50uL, 100uL, 200uL

### Observed MW:

42kDa

### Calculated MW:

26kDa/41kDa/42kDa

### Applications:

WB IHC IF

### Reactivity:

Human, Mouse, Rat

## Antibody Information

### Recommended dilutions:

WB 1:500 - 1:1000 IHC 1:50  
- 1:100 IF 1:50 - 1:100

### Source:

Rabbit

### Isotype:

IgG

### Purification:

Affinity purification

## Protein Background

### Immunogen information

#### Gene ID:

64854

#### Uniprot

P62068

#### Synonyms:

USP46

#### Immunogen:

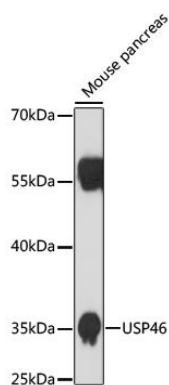
A synthetic Peptide of human USP46

#### Storage:

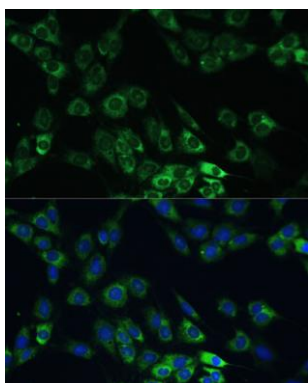
Store at -20°C. Avoid freeze / thaw cycles. Buffer: PBS with 0.02% sodium azide, pH7.3.

## Product Images

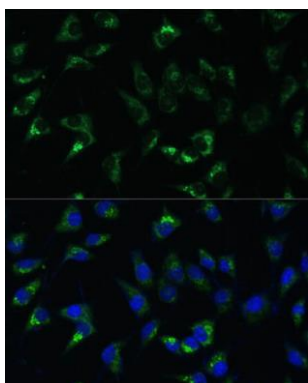
---



Western blot analysis of extracts of mouse pancreas, using USP46 antibody (CAB17863) at 1:1000 dilution. Secondary antibody: HRP Goat Anti-Rabbit IgG (H+L) (CABS014) at 1:10000 dilution. Lysates/proteins: 25ug per lane. Blocking buffer: 3% nonfat dry milk in TBST. Detection: ECL Basic Kit (CABM00020). Exposure time: 90s.



Immunofluorescence analysis of C6 cells using USP46 Polyclonal Antibody (CAB17863) at dilution of 1:100 (40x lens). Blue: DAPI for nuclear staining.



Immunofluorescence analysis of L-929 cells using USP46 Polyclonal Antibody (CAB17863) at dilution of 1:100 (40x lens). Blue: DAPI for nuclear staining.