

MSL1 Rabbit Polyclonal Antibody



CAB17878

Product Information

Size:

20uL, 50uL, 100uL, 200uL

Observed MW:

80kDa

Calculated MW:

Applications:

WB

Reactivity:

Human, Mouse, Rat

Antibody Information

Recommended dilutions:

WB 1:500 - 1:2000

Source:

Rabbit

Isotype:

IgG

Purification:

Affinity purification

Protein Background

Immunogen information

Gene ID:

339287

Uniprot

Q68DK7

Synonyms:

MSL-1; hMSL1; MSL1

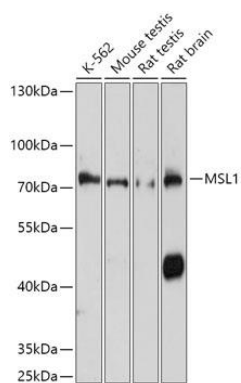
Immunogen:

Recombinant fusion protein containing a sequence corresponding to amino acids 210-300 of human MSL1 (NP_001012241).

Storage:

Store at -20°C. Avoid freeze / thaw cycles. Buffer: PBS with 0.02% sodium azide, 50% glycerol, pH7.3.

Product Images



Western blot - MSL1 Polyclonal Antibody (CAB17878)