

# GPR153 Rabbit Polyclonal Antibody



CAB17884

## Product Information

### Size:

20uL, 50uL, 100uL, 200uL

### Observed MW:

65kDa

### Calculated MW:

## Protein Background

This gene encodes an integral membrane protein that belongs to the Class A rhodopsin superfamily of G protein coupled receptors. The encoded protein is expressed primarily in the central nervous system. A knockdown of the orthologous gene in rat is associated with a significant reduction in food intake and impaired decision making ability. Mutations in this gene are associated with schizophrenia, autism, and other neuropsychiatric disorders. The expression of this gene is activated by the glioma-associated oncogene homolog 1 transcription factor which, in turn, is activated by sonic hedgehog in normal and tumorigenic cells. [provided by RefSeq, Feb 2017]

## Immunogen information

### Applications:

WB

### Reactivity:

Human, Mouse, Rat

### Gene ID:

387509

### Uniprot

Q6NV75

### Synonyms:

PGR1; GPR153

## Antibody Information

### Recommended dilutions:

WB 1:500 - 1:2000

### Source:

Rabbit

### Isotype:

IgG

### Immunogen:

A synthetic peptide of Human GPR153.

### Storage:

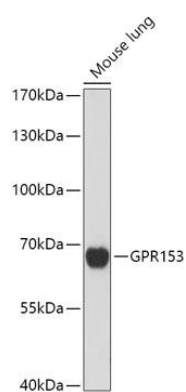
Store at -20°C. Avoid freeze / thaw cycles. Buffer: PBS with 0.02% sodium azide, 50% glycerol, pH7.3.

### Purification:

Affinity purification

## Product Images

---



Western blot - GPR153 Polyclonal Antibody (CAB17884)