

TFF1 Rabbit Polyclonal Antibody



CAB1789

Product Information

Size:

20uL, 50uL, 100uL, 200uL

Observed MW:

12kDa

Calculated MW:

9kDa

Applications:

WB IHC

Reactivity:

Human, Mouse, Rat

Protein Background

Members of the trefoil family are characterized by having at least one copy of the trefoil motif, a 40-amino acid domain that contains three conserved disulfides. They are stable secretory proteins expressed in gastrointestinal mucosa. Their functions are not defined, but they may protect the mucosa from insults, stabilize the mucus layer, and affect healing of the epithelium. This gene, which is expressed in the gastric mucosa, has also been studied because of its expression in human tumors. This gene and two other related trefoil family member genes are found in a cluster on chromosome 21.

Immunogen information

Gene ID:

7031

Uniprot

P04155

Synonyms:

TFF1; BCEI; D21S21; HP1.A; HPS2; pNR-2; pS2

Antibody Information

Recommended dilutions:

WB 1:500 - 1:1000 IHC 1:50
- 1:200

Source:

Rabbit

Isotype:

IgG

Purification:

Affinity purification

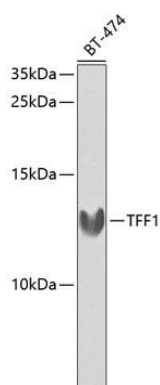
Immunogen:

Recombinant fusion protein containing a sequence corresponding to amino acids 25-84 of human TFF1 (NP_003216.1).

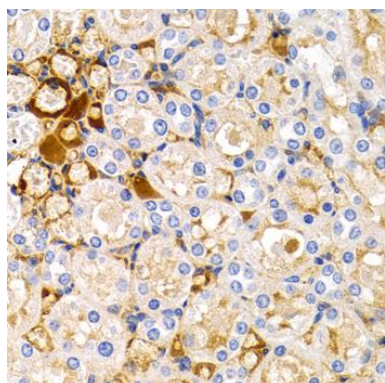
Storage:

Store at -20°C. Avoid freeze / thaw cycles. Buffer: PBS with 0.02% sodium azide, 50% glycerol, pH7.3.

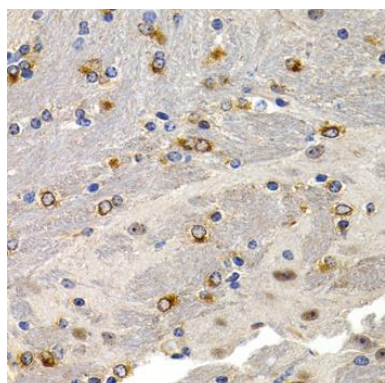
Product Images



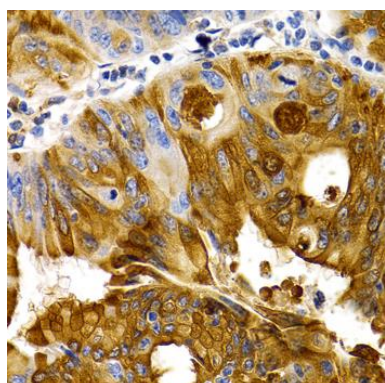
Western blot analysis of extracts of BT-474 cells, using TFF1 antibody (CAB1789) at 1:1000 dilution. Secondary antibody: HRP Goat Anti-Rabbit IgG (H+L) (CABS014) at 1:10000 dilution. Lysates/proteins: 25ug per lane. Blocking buffer: 3% nonfat dry milk in TBST. Detection: ECL Enhanced Kit (CABM00021). Exposure time: 90s.



Immunohistochemistry of paraffin-embedded rat kidney using TFF1 antibody (CAB1789) at dilution of 1:200 (40x lens).



Immunohistochemistry of paraffin-embedded mouse brain using TFF1 antibody (CAB1789) at dilution of 1:200 (40x lens).



Immunohistochemistry of paraffin-embedded human colon carcinoma using TFF1 antibody (CAB1789) at dilution of 1:200 (40x lens).