

# [KO Validated] APP Rabbit Monoclonal Antibody



CAB17911

## Product Information

### Size:

20uL, 50uL, 100uL, 200uL

### Observed MW:

100-140kDa

### Calculated MW:

95kDa

### Applications:

WB IHC IF IP

### Reactivity:

Human, Mouse, Rat

## Antibody Information

### Recommended dilutions:

WB 1:500 - 1:2000 IHC 1:50

- 1:200 IF 1:50 - 1:200 IP

1:50 - 1:200

### Source:

Rabbit

### Isotype:

IgG

### Purification:

Affinity purification

## Protein Background

This gene encodes a cell surface receptor and transmembrane precursor protein that is cleaved by secretases to form a number of peptides. Some of these peptides are secreted and can bind to the acetyltransferase complex APBB1/TIP60 to promote transcriptional activation, while others form the protein basis of the amyloid plaques found in the brains of patients with Alzheimer disease. In addition, two of the peptides are antimicrobial peptides, having been shown to have bacteriocidal and antifungal activities. Mutations in this gene have been implicated in autosomal dominant Alzheimer disease and cerebroarterial amyloidosis (cerebral amyloid angiopathy). Multiple transcript variants encoding several different isoforms have been found for this gene. [provided by RefSeq, Aug 2014]

## Immunogen information

### Gene ID:

351

### Uniprot

P05067

### Synonyms:

AAA; ABETA; ABPP; AD1; APP1; CTFgamma; CVAP; PN-II; PN2; Amyloid beta A4; APP; ABeta42; preA4

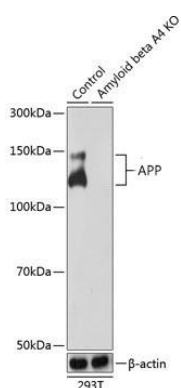
### Immunogen:

A synthesized peptide derived from human APP

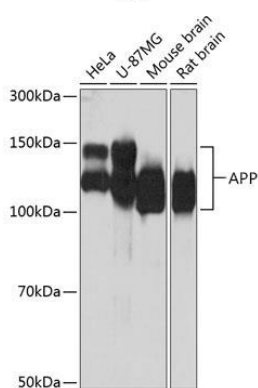
### Storage:

Store at -20°C. Avoid freeze / thaw cycles. Buffer: PBS with 0.02% sodium azide, 0.05% BSA, 50% glycerol, pH7.3.

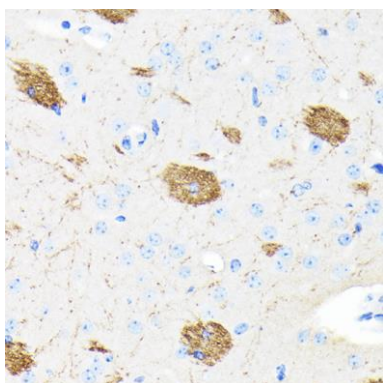
## Product Images



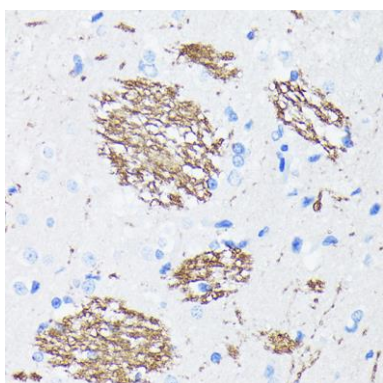
Western blot analysis of extracts from normal (control) and APP knockout (KO) 293T cells, using APP antibody (CAB17911) at 1:1000 dilution. Secondary antibody: HRP Goat Anti-Rabbit IgG (H+L) (CABS014) at 1:10000 dilution. Lysates/proteins: 25ug per lane. Blocking buffer: 3% nonfat dry milk in TBST. Detection: ECL Basic Kit (CABM00020). Exposure time: 10s.



Western blot analysis of extracts of various cell lines, using APP antibody (CAB17911) at 1:1000 dilution. Secondary antibody: HRP Goat Anti-Rabbit IgG (H+L) (CABS014) at 1:10000 dilution. Lysates/proteins: 25ug per lane. Blocking buffer: 3% nonfat dry milk in TBST. Detection: ECL Basic Kit (CABM00020). Exposure time: 10s.



Immunohistochemistry of paraffin-embedded mouse brain using APP Rabbit mAb (CAB17911) at dilution of 1:100 (40x lens).



Immunohistochemistry of paraffin-embedded rat brain using APP Rabbit mAb (CAB17911) at dilution of 1:100 (40x lens).