

BIN1 Rabbit Polyclonal Antibody



CAB1792

Product Information

Size:

20uL, 50uL, 100uL, 200uL

Observed MW:

65kDa

Calculated MW:

45-64kDa

Applications:

WB IHC IF

Reactivity:

Human, Rat

Protein Background

This gene encodes several isoforms of a nucleocytoplasmic adaptor protein, one of which was initially identified as a MYC-interacting protein with features of a tumor suppressor. Isoforms that are expressed in the central nervous system may be involved in synaptic vesicle endocytosis and may interact with dynamin, synaptojanin, endophilin, and clathrin. Isoforms that are expressed in muscle and ubiquitously expressed isoforms localize to the cytoplasm and nucleus and activate a caspase-independent apoptotic process. Studies in mouse suggest that this gene plays an important role in cardiac muscle development. Alternate splicing of the gene results in several transcript variants encoding different isoforms. Aberrant splice variants expressed in tumor cell lines have also been described.

Immunogen information

Gene ID:

274

Uniprot

O00499

Antibody Information

Recommended dilutions:

WB 1:500 - 1:2000 IHC 1:50
- 1:200 IF 1:20 - 1:50

Source:

Rabbit

Isotype:

IgG

Purification:

Affinity purification

Synonyms:

BIN1; AMPH2; AMPHL; SH3P9

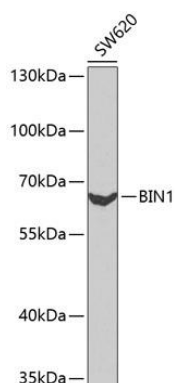
Immunogen:

Recombinant fusion protein containing a sequence corresponding to amino acids 230-409 of human BIN1 (NP_647601.1).

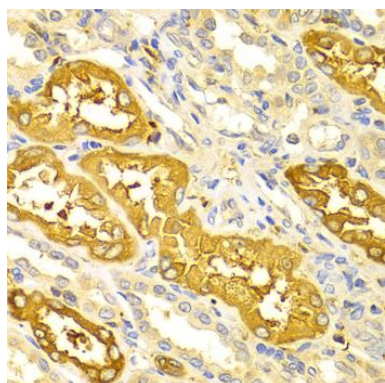
Storage:

Store at -20°C. Avoid freeze / thaw cycles. Buffer: PBS with 0.02% sodium azide, 50% glycerol, pH7.3.

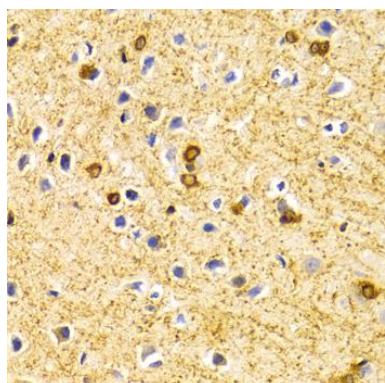
Product Images



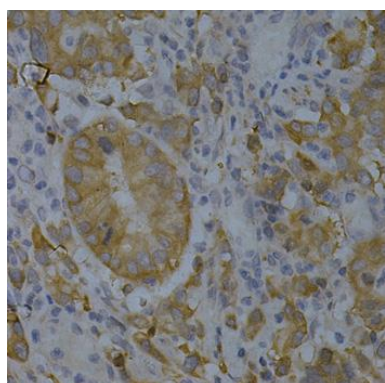
Western blot analysis of extracts of SW620 cells, using BIN1 antibody (CAB1792) at 1:1000 dilution. Secondary antibody: HRP Goat Anti-Rabbit IgG (H+L) (CABS014) at 1:10000 dilution. Lysates/proteins: 25ug per lane. Blocking buffer: 3% nonfat dry milk in TBST. Detection: ECL Enhanced Kit (CABM00021).



Immunohistochemistry of paraffin-embedded human kidney using BIN1 Antibody (CAB1792) at dilution of 1:100 (40x lens).



Immunohistochemistry of paraffin-embedded rat brain using BIN1 Antibody (CAB1792) at dilution of 1:100 (40x lens).



Immunohistochemistry of paraffin-embedded human gastric cancer using BIN1 Antibody (CAB1792) at dilution of 1:200 (40x lens).