

# pan-PKC Rabbit Polyclonal Antibody



CAB17922

## Product Information

### Size:

20uL, 50uL, 100uL, 200uL

### Observed MW:

83kDa

### Calculated MW:

59kDa/67kDa/74- 83kDa

### Applications:

WB IF

### Reactivity:

Human, Mouse, Rat

## Protein Background

Protein kinase C (PKC) is a family of serine- and threonine-specific protein kinases that can be activated by calcium and second messenger diacylglycerol. PKC family members phosphorylate a wide variety of protein targets and are known to be involved in diverse cellular signaling pathways. PKC family members also serve as major receptors for phorbol esters, a class of tumor promoters. Each member of the PKC family has a specific expression profile and is believed to play a distinct role in cells. The protein encoded by this gene is one of the PKC family members. This protein kinase has been reported to be involved in many different cellular functions, such as B cell activation, apoptosis induction, endothelial cell proliferation, and intestinal sugar absorption.

## Immunogen information

### Gene ID:

5578/5579/5580/5581/5583/5588

### Uniprot

P17252/P05771/Q05655/Q02156/P24723/Q04759

## Antibody Information

### Recommended dilutions:

WB 1:500 - 1:2000 IF 1:50 - 1:200

### Source:

Rabbit

### Isotype:

IgG

### Purification:

Affinity purification

### Synonyms:

PRKCA/PRKCB/PRKCD/PRKCE/PRKCH/PRKCQ

### Immunogen:

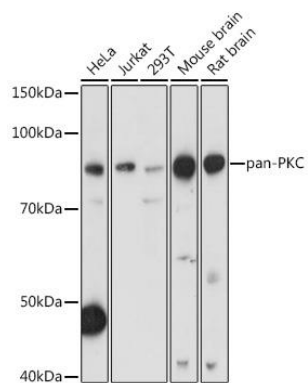
A synthetic peptide of human pan-PKC.

### Storage:

Store at -20°C. Avoid freeze / thaw cycles. Buffer: PBS with 0.02% sodium azide, 50% glycerol, pH7.3.

## Product Images

---



Western blot - pan-PKC Rabbit pAb (CAB17922)