

ENAH Rabbit Polyclonal Antibody



CAB17932

Product Information

Size:

20uL, 50uL, 100uL, 200uL

Observed MW:

110kDa

Calculated MW:

Applications:

WB IF

Reactivity:

Human, Mouse, Rat

Antibody Information

Recommended dilutions:

WB 1:500 - 1:2000 IF 1:50 - 1:200

Source:

Rabbit

Isotype:

IgG

Purification:

Affinity purification

Protein Background

Immunogen information

Gene ID:

55740

Uniprot

Q8N8S7

Synonyms:

ENA; MENA; NDPP1; ENAH

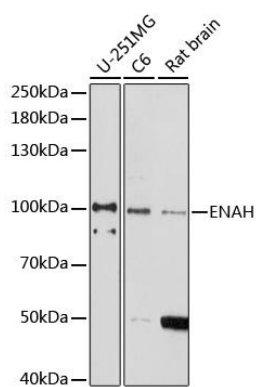
Immunogen:

Recombinant fusion protein containing a sequence corresponding to amino acids 412-591 of human ENAH (NP_001008493.1).

Storage:

Store at -20°C. Avoid freeze / thaw cycles. Buffer: PBS with 0.02% sodium azide, 50% glycerol, pH7.3.

Product Images



Western blot - ENAH Polyclonal Antibody (CAB17932)