

RELN Rabbit Polyclonal Antibody



CAB17936

Product Information

Size:

20uL, 50uL, 100uL, 200uL

Observed MW:

180KDa/388KDa

Calculated MW:

Applications:

WB IHC

Reactivity:

Human, Mouse, Rat

Antibody Information

Recommended dilutions:

WB 1:500 - 1:2000 IHC 1:50
- 1:200

Source:

Rabbit

Isotype:

IgG

Purification:

Affinity purification

Protein Background

This gene encodes a large secreted extracellular matrix protein thought to control cell-cell interactions critical for cell positioning and neuronal migration during brain development. This protein may be involved in schizophrenia, autism, bipolar disorder, major depression and in migration defects associated with temporal lobe epilepsy. Mutations of this gene are associated with autosomal recessive lissencephaly with cerebellar hypoplasia. Two transcript variants encoding distinct isoforms have been identified for this gene. Other transcript variants have been described but their full length nature has not been determined. [provided by RefSeq, Jul 2008]

Immunogen information

Gene ID:

5649

Uniprot

P78509

Synonyms:

ETL7; LIS2; PRO1598; RL; RELN

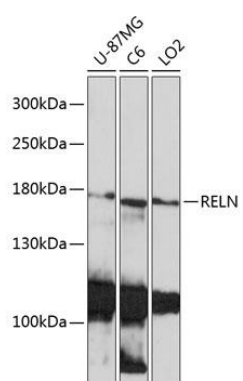
Immunogen:

Recombinant protein of human RELN.

Storage:

Store at -20°C. Avoid freeze / thaw cycles. Buffer: PBS with 0.02% sodium azide, 50% glycerol, pH7.3.

Product Images



Western blot - RELN Rabbit pAb (CAB17936)