

# RPL35A Rabbit Polyclonal Antibody



CAB17938

---

## Product Information

### Size:

20uL, 50uL, 100uL, 200uL

### Observed MW:

12kDa

### Calculated MW:

12kDa

### Applications:

WB

### Reactivity:

Mouse, Rat

## Antibody Information

### Recommended dilutions:

WB 1:500 - 1:2000

### Source:

Rabbit

### Isotype:

IgG

### Purification:

Affinity purification

## Protein Background

### Immunogen information

#### Gene ID:

6165

#### Uniprot

P18077

#### Synonyms:

DBA5; L35A; RPL35A

#### Immunogen:

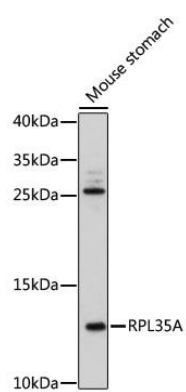
Recombinant fusion protein containing a sequence corresponding to amino acids 10-90 of human RPL35A (NP\_000987.2).

#### Storage:

Store at -20°C. Avoid freeze / thaw cycles. Buffer: PBS with 0.02% sodium azide, 50% glycerol, pH7.3.

## Product Images

---



Western blot - RPL35A Polyclonal Antibody (CAB17938)