

# ERN1 Rabbit Polyclonal Antibody



CAB17940

---

## Product Information

### Size:

20uL, 50uL, 100uL, 200uL

### Observed MW:

130kDa

### Calculated MW:

6kDa/109kDa

### Applications:

WB

### Reactivity:

Human

## Protein Background

The protein encoded by this gene is the ER to nucleus signalling 1 protein, a human homologue of the yeast Ire1 gene product. This protein possesses intrinsic kinase activity and an endoribonuclease activity and it is important in altering gene expression as a response to endoplasmic reticulum-based stress signals.

## Immunogen information

### Gene ID:

2081

### Uniprot

O75460

### Synonyms:

ERN1; IRE1; IRE1P; IRE1a; hIRE1p

## Antibody Information

### Recommended dilutions:

WB 1:500 - 1:2000

### Source:

Rabbit

### Isotype:

IgG

### Purification:

Affinity purification

### Immunogen:

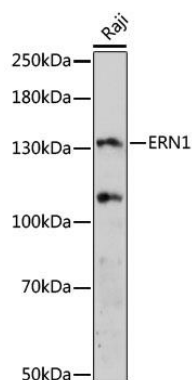
Recombinant protein of human ERN1.

### Storage:

Store at -20°C. Avoid freeze / thaw cycles. Buffer: PBS with 0.02% sodium azide, 50% glycerol, pH7.3.

## Product Images

---



Western blot analysis of extracts of Raji cells, using ERN1 antibody (CAB17940) at 1:500 dilution. Secondary antibody: HRP Goat Anti-Rabbit IgG (H+L) (CABS014) at 1:10000 dilution. Lysates/proteins: 25ug per lane. Blocking buffer: 3% nonfat dry milk in TBST. Detection: ECL Basic Kit (CABM00020). Exposure time: 60s.