

pan-methyl-Histidine Rabbit Polyclonal Antibody



CAB17948

Product Information

Size:

20uL, 50uL, 100uL

Observed MW:

Refer to figures

Calculated MW:

Applications:

WB DB

Reactivity:

All

Antibody Information

Recommended dilutions:

WB 1:500 - 1:2000 DB 1:50
- 1:200

Source:

Rabbit

Isotype:

IgG

Purification:

Affinity purification

Protein Background

Immunogen information

Gene ID:

Uniprot

Synonyms:

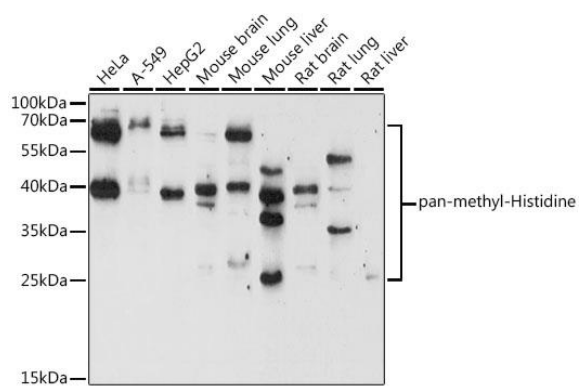
Immunogen:

A synthetic peptide of Methylated Histidine His.

Storage:

Store at -20°C. Avoid freeze / thaw cycles. Buffer: PBS with 0.02% sodium azide, 50% glycerol, pH7.3.

Product Images



Western blot - pan-methyl-Histidine pAb (CAB17948)