

MT-CO2 Rabbit Polyclonal Antibody



CAB17965

Product Information

Size:

20uL, 50uL, 100uL, 200uL

Observed MW:

20kDa

Calculated MW:

25kDa

Applications:

WB

Reactivity:

Human, Mouse, Rat

Antibody Information

Recommended dilutions:

WB 1:500 - 1:2000

Source:

Rabbit

Isotype:

IgG

Purification:

Affinity purification

Protein Background

Immunogen information

Gene ID:

4513

Uniprot

P00403

Synonyms:

MT-CO2; COII; MTCO2; COX2

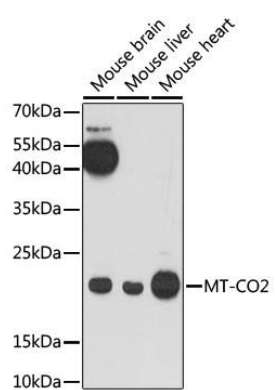
Immunogen:

A synthetic peptide of human MT-CO2

Storage:

Store at -20°C. Avoid freeze / thaw cycles. Buffer: PBS with 0.02% sodium azide, 50% glycerol, pH7.3.

Product Images



Western blot - MT-CO2 Polyclonal Antibody (CAB17965)