

MT-ND2 Rabbit Polyclonal Antibody



CAB17968

Product Information

Size:

20uL, 50uL, 100uL, 200uL

Observed MW:

43kDa

Calculated MW:

43kDa

Applications:

WB IF

Reactivity:

Human, Mouse

Antibody Information

Recommended dilutions:

WB 1:500 - 1:2000 IF 1:50 - 1:200

Source:

Rabbit

Isotype:

IgG

Purification:

Affinity purification

Protein Background

Immunogen information

Gene ID:

4536

Uniprot

P03891

Synonyms:

MTND2; MT-ND2

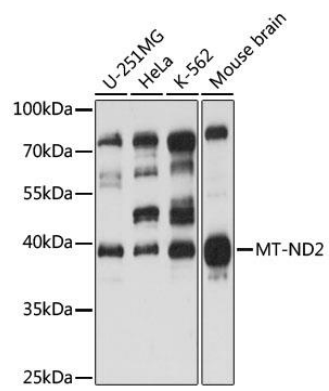
Immunogen:

A synthetic peptide corresponding to a sequence within amino acids 250 to the C-terminus of human MT-ND2 (AXF37149.1).

Storage:

Store at -20°C. Avoid freeze / thaw cycles. Buffer: PBS with 0.02% sodium azide, 50% glycerol, pH7.3.

Product Images



Western blot - MT-ND2 Polyclonal Antibody (CAB17968)