

POU1F1 Rabbit Polyclonal Antibody



CAB17976

Product Information

Size:

20uL, 50uL, 100uL, 200uL

Observed MW:

33kDa

Calculated MW:

33kDa

Applications:

WB

Reactivity:

Human

Protein Background

This gene encodes a member of the POU family of transcription factors that regulate mammalian development. The protein regulates expression of several genes involved in pituitary development and hormone expression. Mutations in this genes result in combined pituitary hormone deficiency. Multiple transcript variants encoding different isoforms have been found for this gene.

Immunogen information

Gene ID:

5449

Uniprot

P28069

Synonyms:

PIT1; CPHD1; GHF-1; Pit-1; POU1F1a; POU1F1

Antibody Information

Recommended dilutions:

WB 1:500 - 1:2000

Source:

Rabbit

Isotype:

IgG

Purification:

Affinity purification

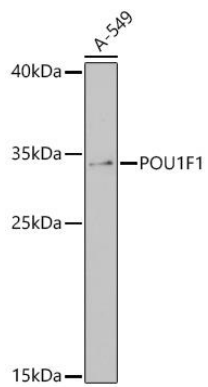
Immunogen:

Recombinant protein of human POU1F1.

Storage:

Store at -20°C. Avoid freeze / thaw cycles. Buffer: PBS with 0.02% sodium azide, 50% glycerol, pH7.3.

Product Images



Western blot - POU1F1 Polyclonal Antibody (CAB17976)