

# FGF2 Rabbit Polyclonal Antibody



CAB17989

---

## Product Information

### Size:

20uL, 50uL, 100uL, 200uL

### Observed MW:

22kDa/24kDa

### Calculated MW:

22kDa/24kDa

### Applications:

WB

### Reactivity:

Human, Mouse, Rat

## Antibody Information

### Recommended dilutions:

WB 1:500 - 1:2000

### Source:

Rabbit

### Isotype:

IgG

### Purification:

Affinity purification

## Protein Background

### Immunogen information

#### Gene ID:

2247

#### Uniprot

#### Synonyms:

BFGF; FGF-2; FGFB; HBGF-2; Basic FGF; FGF2

#### Immunogen:

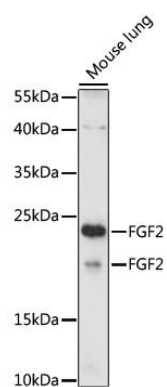
Recombinant protein of human FGF2.

#### Storage:

Store at -20°C. Avoid freeze / thaw cycles. Buffer: PBS with 0.02% sodium azide, 50% glycerol, pH7.3.

## Product Images

---



Western blot - FGF2 Polyclonal Antibody (CAB17989)