

MT-ND6 Rabbit Polyclonal Antibody



CAB17991

Product Information

Size:

20uL, 50uL, 100uL, 200uL

Observed MW:

19kDa

Calculated MW:

19kDa

Applications:

WB

Reactivity:

Human, Mouse, Rat

Antibody Information

Recommended dilutions:

WB 1:500 - 1:2000

Source:

Rabbit

Isotype:

IgG

Purification:

Affinity purification

Protein Background

Immunogen information

Gene ID:

4541

Uniprot

P03923

Synonyms:

MTND6; MT-ND6

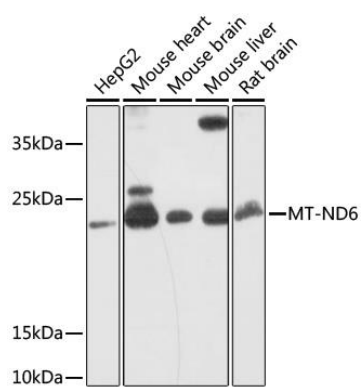
Immunogen:

A synthetic peptide corresponding to a sequence within amino acids 120 to the C-terminus of human MT-ND6 (BAH15396.1).

Storage:

Store at -20°C. Avoid freeze / thaw cycles. Buffer: PBS with 0.02% sodium azide, 50% glycerol, pH7.3.

Product Images



Western blot - MT-ND6 Rabbit pAb (CAB17991)