

XRCC2 Rabbit Polyclonal Antibody



CAB1800

Product Information

Size:

20uL, 50uL, 100uL, 200uL

Observed MW:

37kDa

Calculated MW:

31kDa

Applications:

WB IHC IF

Reactivity:

Human, Rat

Protein Background

This gene encodes a member of the RecA/Rad51-related protein family that participates in homologous recombination to maintain chromosome stability and repair DNA damage. This gene is involved in the repair of DNA double-strand breaks by homologous recombination and it functionally complements Chinese hamster *irs1*, a repair-deficient mutant that exhibits hypersensitivity to a number of different DNA-damaging agents.

Immunogen information

Gene ID:

7516

Uniprot

O43543

Synonyms:

XRCC2; FANCU

Antibody Information

Recommended dilutions:

WB 1:500 - 1:2000 IHC 1:50
- 1:200 IF 1:50 - 1:200

Source:

Rabbit

Isotype:

IgG

Purification:

Affinity purification

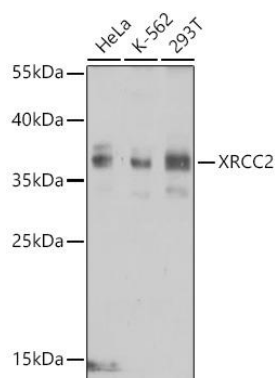
Immunogen:

Recombinant fusion protein containing a sequence corresponding to amino acids 1-280 of human XRCC2 (NP_005422.1).

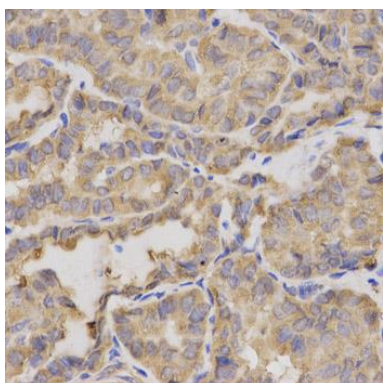
Storage:

Store at -20°C. Avoid freeze / thaw cycles. Buffer: PBS with 0.02% sodium azide, 50% glycerol, pH7.3.

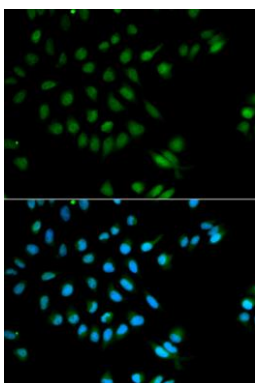
Product Images



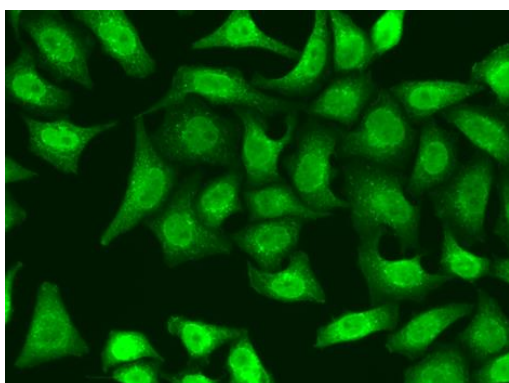
Western blot analysis of extracts of various cell lines, using XRCC2 antibody (CAB1800) at 1:1000 dilution. Secondary antibody: HRP Goat Anti-Rabbit IgG (H+L) (CABS014) at 1:10000 dilution. Lysates/proteins: 25ug per lane. Blocking buffer: 3% nonfat dry milk in TBST. Detection: ECL Basic Kit (CABM00020). Exposure time: 30s.



Immunohistochemistry of paraffin-embedded human thyroid cancer using XRCC2 antibody (CAB1800) at dilution of 1:200 (40x lens).



Immunofluorescence analysis of MCF-7 cells using XRCC2 antibody (CAB1800). Blue: DAPI for nuclear staining.



Immunofluorescence analysis of A549 cells using XRCC2 antibody (CAB1800).