

[KO Validated] CAPN1 Rabbit Polyclonal Antibody

CAB18006



Product Information

Size:

20uL, 50uL, 100uL, 200uL

Observed MW:

75kDa

Calculated MW:

81kDa

Applications:

WB

Reactivity:

Human

Protein Background

The calpains, calcium-activated neutral proteases, are nonlysosomal, intracellular cysteine proteases. The mammalian calpains include ubiquitous, stomach-specific, and muscle-specific proteins. The ubiquitous enzymes consist of heterodimers with distinct large, catalytic subunits associated with a common small, regulatory subunit. This gene encodes the large subunit of the ubiquitous enzyme, calpain 1. Several transcript variants encoding two different isoforms have been found for this gene.

Immunogen information

Gene ID:

823

Uniprot

P07384

Synonyms:

CAPN1; CANP; CANP1; CANPL1; SPG76; muCANP; muCL; calpain 1

Antibody Information

Recommended dilutions:

WB 1:500 - 1:2000

Source:

Rabbit

Isotype:

IgG

Purification:

Affinity purification

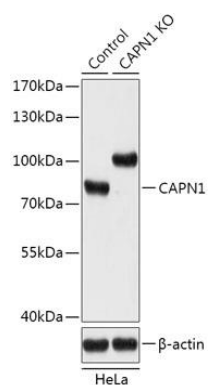
Immunogen:

Recombinant fusion protein containing a sequence corresponding to amino acids 20-330 of human CAPN1 (NP_005177.2).

Storage:

Store at -20°C. Avoid freeze / thaw cycles. Buffer: PBS with 0.02% sodium azide, 50% glycerol, pH7.3.

Product Images



Western blot analysis of extracts from normal (control) and CAPN1 knockout (KO) HeLa cells, using CAPN1 antibody (CAB18006) at 1:1000 dilution. Secondary antibody: HRP Goat Anti-Rabbit IgG (H+L) (CABS014) at 1:10000 dilution. Lysates/proteins: 25ug per lane. Blocking buffer: 3% nonfat dry milk in TBST. Detection: ECL Basic Kit (CABM00020). Exposure time: 10s.