

# [KO Validated] KRT18 Rabbit Polyclonal Antibody



CAB18010

---

## Product Information

### Size:

20uL, 50uL, 100uL, 200uL

### Observed MW:

48kDa

### Calculated MW:

48kDa

### Applications:

WB IHC IF

### Reactivity:

Human, Mouse

## Antibody Information

### Recommended dilutions:

WB 1:500 - 1:2000 IHC 1:50  
- 1:100 IF 1:50 - 1:100

### Source:

Rabbit

### Isotype:

IgG

### Purification:

Affinity purification

## Protein Background

KRT18 encodes the type I intermediate filament chain keratin 18. Keratin 18, together with its filament partner keratin 8, are perhaps the most commonly found members of the intermediate filament gene family. They are expressed in single layer epithelial tissues of the body. Mutations in this gene have been linked to cryptogenic cirrhosis. Two transcript variants encoding the same protein have been found for this gene.

## Immunogen information

### Gene ID:

3875

### Uniprot

P05783

### Synonyms:

KRT18; CK-18; CYK18; K18; keratin 18

### Immunogen:

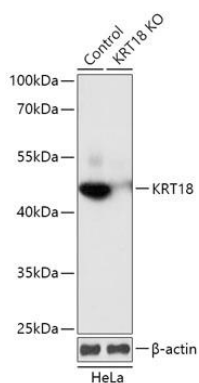
Recombinant fusion protein containing a sequence corresponding to amino acids 127-430 of human KRT18 (NP\_000215.1).

### Storage:

Store at -20°C. Avoid freeze / thaw cycles. Buffer: PBS with 0.02% sodium azide, 50% glycerol, pH7.3.

## Product Images

---



Western blot analysis of extracts from normal (control) and KRT18 knockout (KO) HeLa cells, using KRT18 antibody (CAB18010) at 1:1000 dilution. Secondary antibody: HRP Goat Anti-Rabbit IgG (H+L) (CABS014) at 1:10000 dilution. Lysates/proteins: 25ug per lane. Blocking buffer: 3% nonfat dry milk in TBST. Detection: ECL Basic Kit (CABM00020). Exposure time: 1s.