

# [KO Validated] STRADA Rabbit Polyclonal Antibody

## CAB18012



### Product Information

**Size:**

20uL, 50uL, 100uL, 200uL

**Observed MW:**

48kDa

**Calculated MW:**

33kDa/34kDa/38kDa/41kDa/  
43kDa/48kDa

**Applications:**

WB

**Reactivity:**

Human, Mouse

### Antibody Information

**Recommended dilutions:**

WB 1:1000 - 1:2000

**Source:**

Rabbit

**Isotype:**

IgG

**Purification:**

Affinity purification

### Protein Background

The protein encoded by this gene contains a STE20-like kinase domain, but lacks several residues that are critical for catalytic activity, so it is termed a 'pseudokinase'. The protein forms a heterotrimeric complex with serine/threonine kinase 11 (STK11, also known as LKB1) and the scaffolding protein calcium binding protein 39 (CAB39, also known as MO25). The protein activates STK11 leading to the phosphorylation of both proteins and excluding STK11 from the nucleus. The protein is necessary for STK11-induced G1 cell cycle arrest. A mutation in this gene has been shown to result in polyhydramnios, megalencephaly, and symptomatic epilepsy (PMSE) syndrome. Multiple transcript variants encoding different isoforms have been found for this gene. Additional transcript variants have been described but their full-length nature is not known.

### Immunogen information

**Gene ID:**

92335

**Uniprot**

Q7RTN6

**Synonyms:**

STRADA; LYK5; NY-BR-96; PMSE; STRAD; Stlk

**Immunogen:**

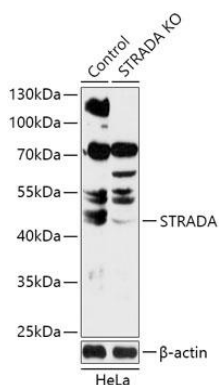
Recombinant fusion protein containing a sequence corresponding to amino acids 25-210 of human STRADA (NP\_699166.2).

**Storage:**

Store at -20°C. Avoid freeze / thaw cycles. Buffer: PBS with 0.02% sodium azide, 50% glycerol, pH7.3.

## Product Images

---



Western blot analysis of extracts from normal (control) and STRADA knockout (KO) HeLa cells, using STRADA antibody (CAB18012) at 1:1000 dilution. Secondary antibody: HRP Goat Anti-Rabbit IgG (H+L) (CABS014) at 1:10000 dilution. Lysates/proteins: 25ug per lane. Blocking buffer: 3% nonfat dry milk in TBST. Detection: ECL Basic Kit (CABM00020). Exposure time: 3min.