

# [KO Validated] AKR1A1 Rabbit Polyclonal Antibody

CAB18014



## Product Information

### Size:

20uL, 50uL, 100uL, 200uL

### Observed MW:

36kDa

### Calculated MW:

36kDa

### Applications:

WB IHC

### Reactivity:

Human, Mouse, Rat

## Protein Background

This gene encodes a member of the aldo/keto reductase superfamily, which consists of more than 40 known enzymes and proteins. This member, also known as aldehyde reductase, is involved in the reduction of biogenic and xenobiotic aldehydes and is present in virtually every tissue. Multiple alternatively spliced transcript variants of this gene exist, all encoding the same protein.

## Immunogen information

### Gene ID:

10327

### Uniprot

P14550

### Synonyms:

AKR1A1; ALDR1; ALR; ARM; DD3; HEL-S-6

## Antibody Information

### Recommended dilutions:

WB 1:500 - 1:2000 IHC 1:50 - 1:200

### Source:

Rabbit

### Isotype:

IgG

### Purification:

Affinity purification

### Immunogen:

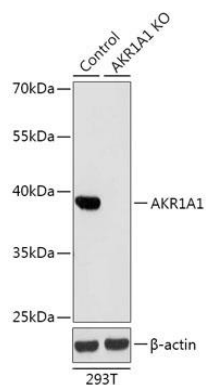
Recombinant fusion protein containing a sequence corresponding to amino acids 1-325 of human AKR1A1 (NP\_006057.1).

### Storage:

Store at -20°C. Avoid freeze / thaw cycles. Buffer: PBS with 0.02% sodium azide, 50% glycerol, pH7.3.

## Product Images

---



Western blot analysis of extracts from normal (control) and AKR1A1 knockout (KO) 293T cells, using AKR1A1 antibody (CAB18014) at 1:1000 dilution. Secondary antibody: HRP Goat Anti-Rabbit IgG (H+L) (CABS014) at 1:10000 dilution. Lysates/proteins: 25ug per lane. Blocking buffer: 3% nonfat dry milk in TBST. Detection: ECL Basic Kit (CABM00020). Exposure time: 30s.