

[KO Validated] AKT2 Rabbit Polyclonal Antibody



CAB18019

Product Information

Size:

20uL, 50uL, 100uL, 200uL

Observed MW:

60kDa

Calculated MW:

51kDa/55kDa

Applications:

WB IHC ICC IF IP ChIP

Reactivity:

Human, Mouse, Rat, Monkey

Protein Background

This gene is a putative oncogene encoding a protein belonging to a subfamily of serine/threonine kinases containing SH2-like (Src homology 2-like) domains. The gene was shown to be amplified and overexpressed in 2 of 8 ovarian carcinoma cell lines and 2 of 15 primary ovarian tumors. Overexpression contributes to the malignant phenotype of a subset of human ductal pancreatic cancers. The encoded protein is a general protein kinase capable of phosphorylating several known proteins.

Immunogen information

Gene ID:

208

Uniprot

P31751

Synonyms:

AKT2; HIHGH; PKBB; PKBBETA; PRKBB; RAC-BETA

Antibody Information

Recommended dilutions:

WB 1:500 - 1:2000 IHC 1:50
- 1:100 ICC 1:50 - 1:200 IF
1:50 - 1:100 IP 1:20 - 1:50
ChIP 1:20 - 1:100

Source:

Rabbit

Isotype:

IgG

Purification:

Affinity purification

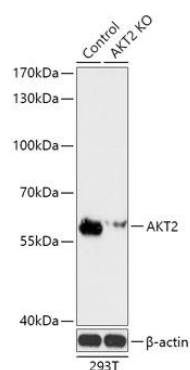
Immunogen:

Recombinant protein of human AKT2

Storage:

Store at -20°C. Avoid freeze / thaw cycles. Buffer: PBS with 0.02% sodium azide, 50% glycerol, pH7.3.

Product Images



Western blot analysis of extracts from normal (control) and AKT2 knockout (KO) 293T cells, using AKT2 antibody (CAB18019) at 1:3000 dilution. Secondary antibody: HRP Goat Anti-Rabbit IgG (H+L) (CABS014) at 1:10000 dilution. Lysates/proteins: 25ug per lane. Blocking buffer: 3% nonfat dry milk in TBST. Detection: ECL Basic Kit (CABM00020). Exposure time: 90s.