

ALDH1A1 Rabbit Polyclonal Antibody



CAB1802

Product Information

Size:

20uL, 50uL, 100uL, 200uL

Observed MW:

55kDa

Calculated MW:

54kDa

Applications:

WB, IHC

Reactivity:

Human, Mouse, Rat

Antibody Information

Recommended dilutions:

WB 1:500 - 1:2000

IHC 1:50 - 1:200

Source:

Rabbit

Isotype:

IgG

Purification:

Affinity purification

Protein Background

The protein encoded by this gene belongs to the aldehyde dehydrogenase family. Aldehyde dehydrogenase is the next enzyme after alcohol dehydrogenase in the major pathway of alcohol metabolism. There are two major aldehyde dehydrogenase isozymes in the liver, cytosolic and mitochondrial, which are encoded by distinct genes, and can be distinguished by their electrophoretic mobility, kinetic properties, and subcellular localization. This gene encodes the cytosolic isozyme. Studies in mice show that through its role in retinol metabolism, this gene may also be involved in the regulation of the metabolic responses to high-fat diet.

Immunogen information

Gene ID:

216

Uniprot

P00352

Synonyms:

ALDH1A1; ALDC; ALDH-E1; ALDH1; ALDH11; HEL-9; HEL-S-53e; HEL12; PUMB1; RALDH1

Immunogen:

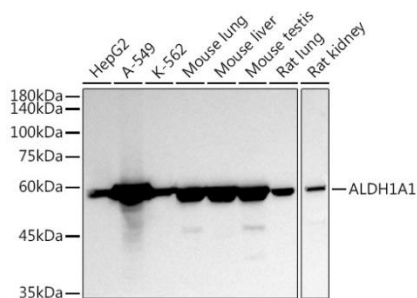
Recombinant fusion protein containing a sequence corresponding to amino acids 48-147 of human ALDH1A1 (NP_000680.2).

Storage:

Store at -20°C. Avoid freeze / thaw cycles.

Buffer: PBS with 0.02% sodium azide, 50% glycerol, pH7.3.

Product Images



Western blot analysis of extracts of various cell lines, using ALDH1A1 antibody (CAB1802) at 1:1000 dilution.

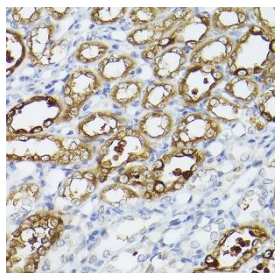
Secondary antibody: HRP Goat Anti-Rabbit IgG (H+L) (CABS014) at 1:10000 dilution.

Lysates/proteins: 25ug per lane.

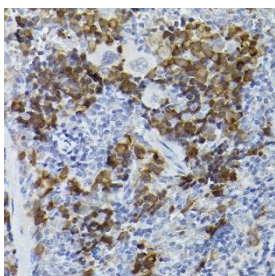
Blocking buffer: 3% non-fat dry milk in TBST.

Detection: ECL Basic Kit (AbGn00020).

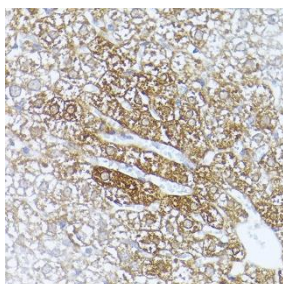
Exposure time: 30s.



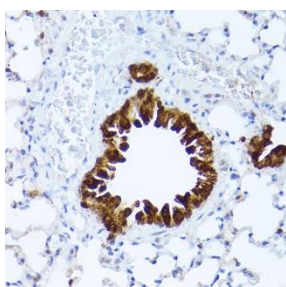
Immunohistochemistry of paraffin-embedded rat kidney using ALDH1A1 Rabbit pAb (CAB1802) at dilution of 1:100 (40x lens).



Immunohistochemistry of paraffin-embedded rat spleen using ALDH1A1 Rabbit pAb (CAB1802) at dilution of 1:100 (40x lens).



Immunohistochemistry of paraffin-embedded mouse liver using ALDH1A1 Rabbit pAb (CAB1802) at dilution of 1:25 (40x lens).



Immunohistochemistry of paraffin-embedded mouse lung using ALDH1A1 Rabbit pAb (CAB1802) at dilution of 1:25 (40x lens).