

# [KO Validated] PIP5K1A Rabbit Polyclonal Antibody

CAB18025



## Product Information

### Size:

20uL, 50uL, 100uL, 200uL

### Observed MW:

63kDa

### Calculated MW:

56kDa/58kDa/61kDa/62kDa

### Applications:

WB IHC IF

### Reactivity:

Human, Mouse, Rat

## Antibody Information

### Recommended dilutions:

WB 1:500 - 1:2000 IHC 1:50  
- 1:200 IF 1:50 - 1:200

### Source:

Rabbit

### Isotype:

IgG

### Purification:

Affinity purification

## Protein Background

### Immunogen information

#### Gene ID:

8394

#### Uniprot

Q99755

#### Synonyms:

PIP5K1A

#### Immunogen:

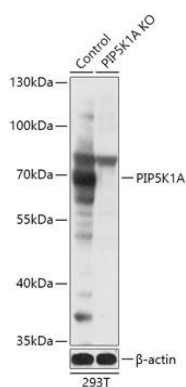
Recombinant fusion protein containing a sequence corresponding to amino acids 231-500 of human PIP5K1A (NP\_001129109.1).

#### Storage:

Store at -20°C. Avoid freeze / thaw cycles. Buffer: PBS with 0.02% sodium azide, 50% glycerol, pH7.3.

## Product Images

---



Western blot analysis of extracts from normal (control) and PIP5K1A knockout (KO) 293T cells, using PIP5K1A antibody (CAB18025) at 1:1000 dilution. Secondary antibody: HRP Goat Anti-Rabbit IgG (H+L) (CABS014) at 1:10000 dilution. Lysates/proteins: 25ug per lane. Blocking buffer: 3% nonfat dry milk in TBST. Detection: ECL Basic Kit (CABM00020). Exposure time: 10s.