

# [KO Validated] CRY1 Rabbit Polyclonal Antibody



CAB18028

## Product Information

### Size:

20uL, 50uL, 100uL, 200uL

### Observed MW:

65kDa

### Calculated MW:

66kDa

### Applications:

WB IHC

### Reactivity:

Human, Mouse

## Protein Background

This gene encodes a flavin adenine dinucleotide-binding protein that is a key component of the circadian core oscillator complex, which regulates the circadian clock. This gene is upregulated by CLOCK/ARNTL heterodimers but then represses this upregulation in a feedback loop using PER/CRY heterodimers to interact with CLOCK/ARNTL. Polymorphisms in this gene have been associated with altered sleep patterns. The encoded protein is widely conserved across plants and animals. Loss of the related gene in mouse results in a shortened circadian cycle in complete darkness.

## Immunogen information

### Gene ID:

1407

### Uniprot

Q16526

### Synonyms:

CRY1; PHLL1; DSPD

## Antibody Information

### Recommended dilutions:

WB 1:500 - 1:2000 IHC 1:50  
- 1:200

### Source:

Rabbit

### Isotype:

IgG

### Purification:

Affinity purification

### Immunogen:

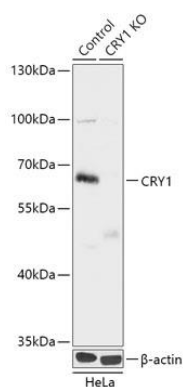
Recombinant fusion protein containing a sequence corresponding to amino acids 507-586 of human CRY1 (NP\_004066.1).

### Storage:

Store at -20°C. Avoid freeze / thaw cycles. Buffer: PBS with 0.02% sodium azide, 50% glycerol, pH7.3.

## Product Images

---



Western blot analysis of extracts from normal (control) and CRY1 knockout (KO) HeLa cells, using CRY1 antibody (CAB18028) at 1:1000 dilution. Secondary antibody: HRP Goat Anti-Rabbit IgG (H+L) (CABS014) at 1:10000 dilution. Lysates/proteins: 25ug per lane. Blocking buffer: 3% nonfat dry milk in TBST. Detection: ECL Basic Kit (CABM00020). Exposure time: 10s.